



mobile made easy.

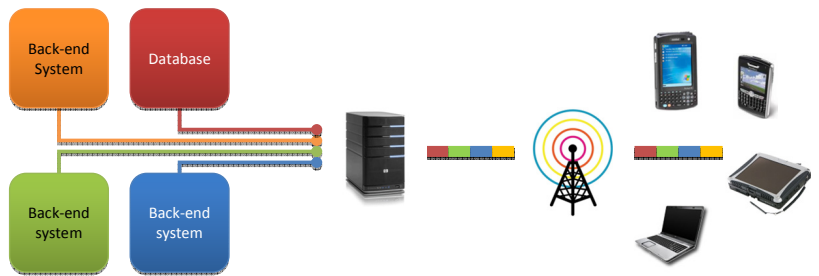
# AGENTRY Mobile Platform

**AGENTRY: AN ENTERPRISE-  
GRADE FRAMEWORK FOR  
DEVELOPING, DEPLOYING AND  
MANAGING YOUR MOBILE  
APPLICATIONS**

Agentry is Syclo's framework for developing, integrating, deploying and managing multiple mobile applications across the enterprise. Over 750 customers in 29 countries have used Agentry to mobilize key business processes and achieve higher productivity, lower costs and better decision-making across the board.



FOUR MOBILE DEVICE TYPES  
TWO CUSTOM PERIPHERALS  
THREE BACK-END SYSTEMS  
TWO NETWORKS



## ANY ENTERPRISE SYSTEM

Whether you have a large enterprise-wide software platform, a smaller domain-specific system or a home-grown database-driven application, you're in luck. Agentry's advanced integration capabilities can help you extend your software to your mobile employees and give them access to critical data where they need it most.

## ANY NETWORK

No, really. From docking cradle to WiMax, Syclo's solutions can use any form of connectivity that makes sense for your business. Best of all, you can use several networks as part of a single application and switch between them to get the ultimate in speed, availability and cost-effectiveness.

## ANY DEVICE

We know your users have different needs. That's why we are not forcing you to choose a single device for your mobile applications. Develop a single set of business logic, choose among multiple device types and operating systems, and let Agentry handle the rest.

ONE MOBILE PLATFORM

# SOPHISTICATED TECHNOLOGY THAT MAKES MOBILE EASY



## APPLICATION DEVELOPMENT

Syclo's Agentry Editor is one of the most feature-rich and intuitive mobile application development tools on the market. Nested in the powerful Eclipse software development platform, Agentry Editor offers the ultimate in personalization, Java development tooling and mobility-specific development features.



## INTEGRATION

Agentry is an advanced SOA framework that takes the pain and uncertainty out of systems integration. From enabling free flow of information with truly callable solutions to creating robust composite integrations, Agentry ensures that your mobile applications and your back-end systems always speak the same language.



## SECURITY

Security is not underestimated at Syclo, and it is built into the very core of our products. In fact, Syclo's solutions are trusted by many government agencies and contractors on projects where security is paramount. And of course, you get complete flexibility in your security settings.



## CONNECTION METHODS

Always available and completely flexible. That, in a nutshell, is all you need to know about connectivity options with Syclo's solutions. The longer version? Agentry's advanced communications management feature set allows you to transmit what you want, when you want and using whatever network best fits your environment.



## DEVICES AND PERIPHERALS

With an ever-growing diversity of mobile devices on the market and with very little standardization among them, trying to deploy a mobile solution that works for all of your users may leave you scratching your head. Agentry takes the risk out of your mobile projects by supporting the hardware you need today and tomorrow.



## LIFECYCLE MANAGEMENT

From comprehensive mobile device management features to over-the-air application deployment and updates to powerful troubleshooting tools, Agentry's got you covered. With all the tools you need to efficiently deploy, manage and evolve your mobile solutions, Agentry sets the standard for low risk, high user uptime and low total cost of ownership.

AGENTRY TAKES THE RISK OUT OF MOBILE DEPLOYMENTS BY MANAGING THE COMPLEXITIES OF INTEGRATION, DEVICES AND NETWORKS



## BENEFITS FOR BUSINESS AND IT

### COMPLETE MORE WORK

Agentry-based solutions help your workers to do more every day. How so? When you eliminate paperwork and streamline the flow of information to and from the field, you save many hours per week in unnecessary travel, idling, hunting for information and end-of-day paperwork sessions. These are the hours that your employees can spend doing actual work — and be happy doing so.

### CAPTURE MORE DATA

Using mobile technology helps you to finally populate your back-end systems with the data you need for planning, analysis and reporting. Syclo's products help you to streamline and automate information capture in the field, giving you near real-time visibility into your supply chain, field service operations, sales and CRM efforts and more! The software's capability to enforce complete and uniform record-keeping ensures that you are never stuck with conflicting, incomplete, or inaccurate information.

### INTEGRATE WITH MULTIPLE ENTERPRISE SYSTEMS

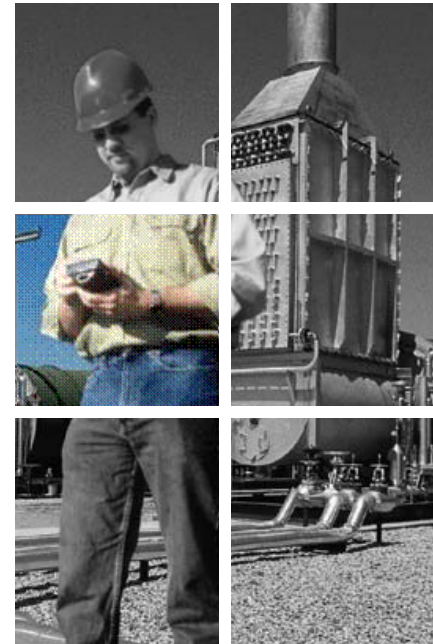
By easily tying into many home-grown and commercial software packages, Agentry can help you to extend necessary functionality to your mobile employees. You can even exchange information with multiple systems in a single workflow, creating truly unique and versatile composite applications.

### GAIN COMPLETE TECHNOLOGY FLEXIBILITY

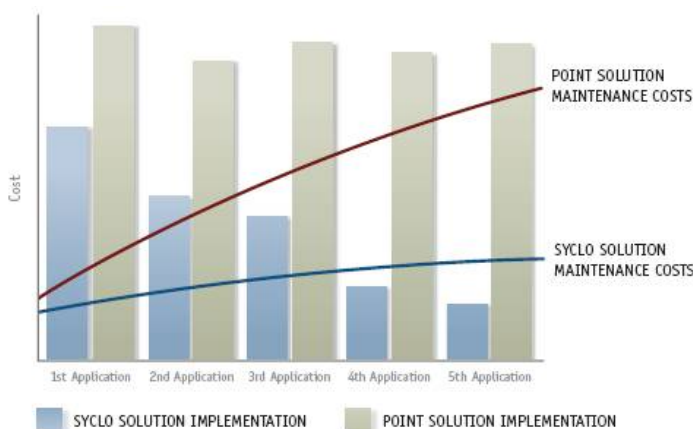
The time has come when you no longer have to deploy mobile applications built around technology limitations. Concentrate on your business issues instead. What information do your users need in the field? What data do you need to collect to get the most out of your enterprise systems? What tools do you want to use? Agentry has built-in capabilities to handle your most demanding requirements.

### DELIVER LONG-TERM, FUTURE PROOF SOLUTIONS

With Agentry, the mobile application you deploy today will work when *everything* changes tomorrow. Upgrade your devices, migrate to different enterprise systems, use different networks and change your business processes. Your Agentry application will adapt with you, saving you many headaches over the solution's lifecycle.



DEPLOY MULTIPLE APPLICATIONS FROM A SINGLE VENDOR AND STANDARDIZE ON A SINGLE SET OF TECHNOLOGY



### ACHIEVE A LOWER TCO AND TIME TO DEPLOYMENT

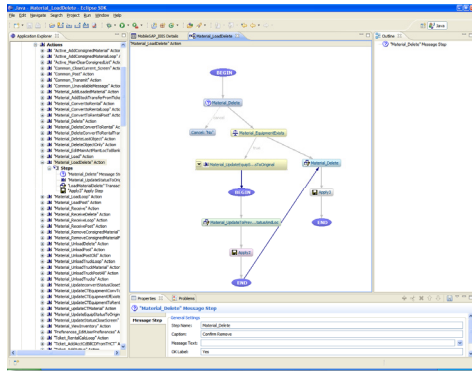
Going with a common mobile platform for several of your mobile solutions lowers per-application implementation and maintenance costs, and results in shorter project times.

- Avoid a lengthy research and selection process
- Share IT resources among multiple deployments
- Lower per-application management and administration costs
- Reduce training requirements and speed up adoption

## A SIMPLE ARCHITECTURE THAT WORKS

### 1) AGENTRY EDITOR

Agentry Editor is a service-oriented application development framework for designing mobile applications. Based on a fourth-generation language, Agentry Editor does not require any code writing. Instead, developers can simply model the business logic (displayed visually in the Map View), quickly create or import application components and define relationships among them. Domain-specific tools such as Syclo's Visual Screen Editor are then used to design mobile application screens in a simple wizard-driven process.



### 2) AGENTRY SERVER

The Agentry Server acts as an intermediary between the mobile application and the back-end system(s), working on their behalf to pull information and post transactions as the users go about their work. It also handles all of the communications, synchronization, device management, security, error handling, personalization and transactional controls needed for the mobile solution to function.

### 3) AGENTRY CLIENT

The Agentry Client is the mobile application that is either installed on the mobile device or is displayed in the device's browser. Compatible with a multitude of devices and operating systems, the Agentry Client can house all pertinent application data and business logic on the device or wirelessly download it in real time from the Agentry server.

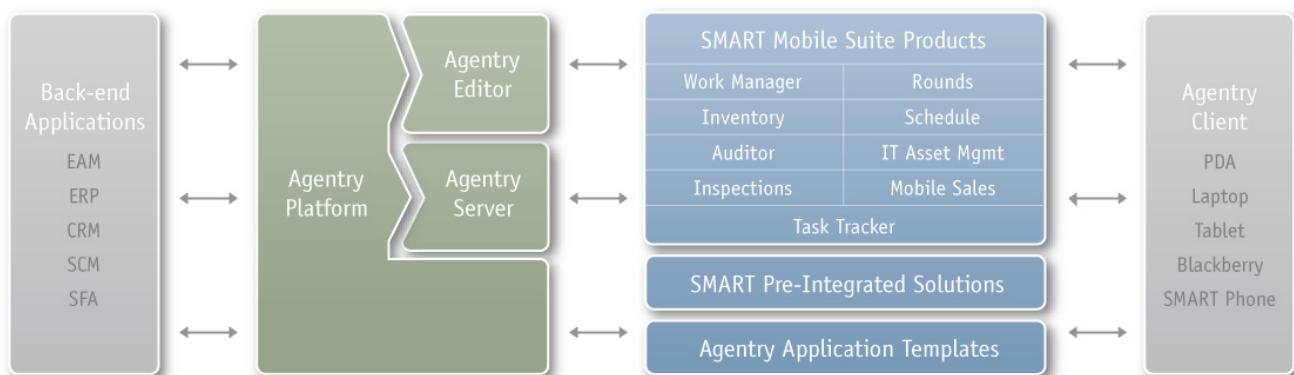
### READY-TO-DEPLOY SOLUTIONS

Over the years, Syclo used the Agentry Platform to create a comprehensive family of ready-to-deploy mobile applications for key business processes like work scheduling and dispatch, inventory management, rounds and inspections. Designed for your enterprise systems and configurable to match your workflow, Syclo's SMART Mobile Suite applications are a proven way to quick ROI. To learn more, visit [www.syclo.com/smart](http://www.syclo.com/smart)



### ABOUT SYCLO

Since 1995, Syclo has helped more than 750 organizations across industries to leverage mobile technology to streamline workflow and improve productivity. Syclo's solutions make data collection and decision making faster, easier and more reliable — reducing costs and driving more value from enterprise systems. Together, Syclo's Agentry™ platform and SMART Mobile Suite products help companies gain a real-time, 360-degree view of operations to support ongoing growth and profitability.



**Syclo LLC**  
 1721 Moon Lake Boulevard | Suite 300  
 Hoffman Estates, IL 60169  
 847.567.9256 toll free | [info@syclo.com](mailto:info@syclo.com)  
[www.syclo.com](http://www.syclo.com)

Syclo International Limited | Europe, Middle East & Africa  
 Fetcham Park House, Lower Road, Fetcham,  
 Leatherhead, Surrey, KT22 9HD, United Kingdom  
 +44 (0) 1372 371031 phone | +44 (0) 1372 371032 fax